



SIMPLE LIFE



SIMPLE LIFE



## Shrewsbury Close, Middleton, M24

£1,025 PCM

Welcome to Simple Life's Shrewsbury Close homes. Middleton is ideally located close to the main motorway networks, the M62, M60, the main Manchester Outer Ring Road and the A627(M). Shrewsbury Close has excellent bus and rail networks, and also sits on the Metrolink line with Mill Hills station located 2.3 miles away.

The Irwell is a stunning home built with you in mind.

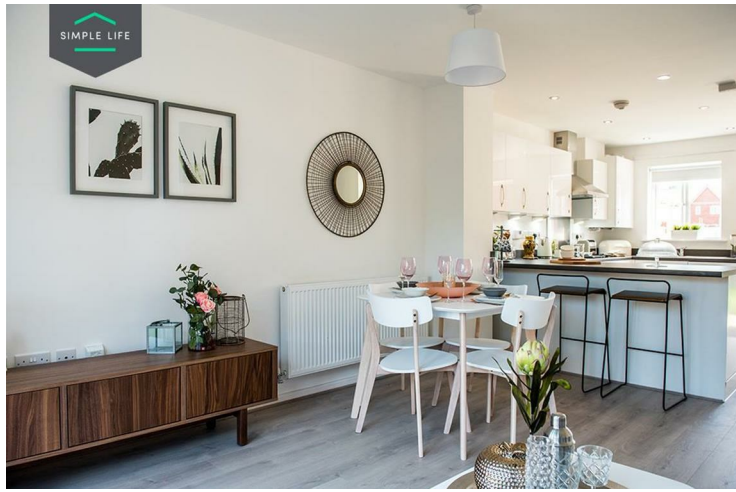
Entering through the front door you are welcomed by an attractive kitchen with a range of contemporary fitted units and modern integrated appliances. Heading through the hallway will take you into a spacious living/dining area which is finished with beautiful wooden flooring and French windows which open out onto your private rear garden. The lower floor also benefits from a storage cupboard and WC.

Upstairs you will find two spacious double rooms, the master bedroom including a fitted, mirrored wardrobe, whilst the second bedroom benefits from having built in storage space. There is also a main bathroom equipped with a bath and shower.

The site benefits from excellent local amenities and a good range of local schools, including the nearby St Anne's Academy.

Deposit: £1180  
Unfurnished  
Council tax: A  
Available 2nd July 2024





## Key Features

- Private driveway
- Fitted wardrobes to master bedroom
- Fridge freezer
- Oven and hob
- Dark ash style worktops
- Security alarm system
- Dishwasher
- Washing/drying machine
- Light wash wood effect flooring
- Modern, white kitchen units

## Location

